



**BOUNDED**



# BOUND

A SOLO EXHIBITION BY STEFAN  
SMIT WITH ABEND GALLERY

## NARRATIVE

- VI VI XVI -

*Smit's latest body of work follows on from his previous solo exhibition, "CURB" which dealt with our relationship with our urban environments and the strange irony that develops in increasingly larger cities, finding that the closer people live together the further alienated they feel.*

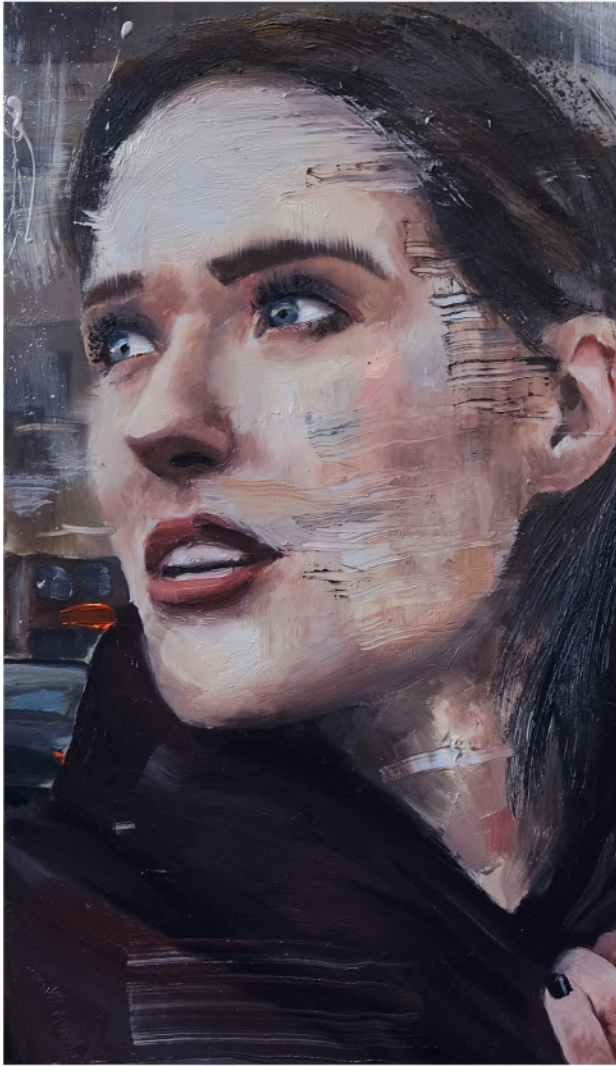
*Smit has taken careful detail in choosing which subjects to paint by adding another level of complexity to his various compositions, taking into consideration each character's social structure, hierarchies and inner tumultuous seas or placid pools that spill over into their depicted world.*

*Bound offers a small glimpse into the world of the chosen subject, like a frozen moment of people watching, that if viewed carefully enough can tell you everything about them.*

ABEND  
GALLERY

BOUND  
SOLO

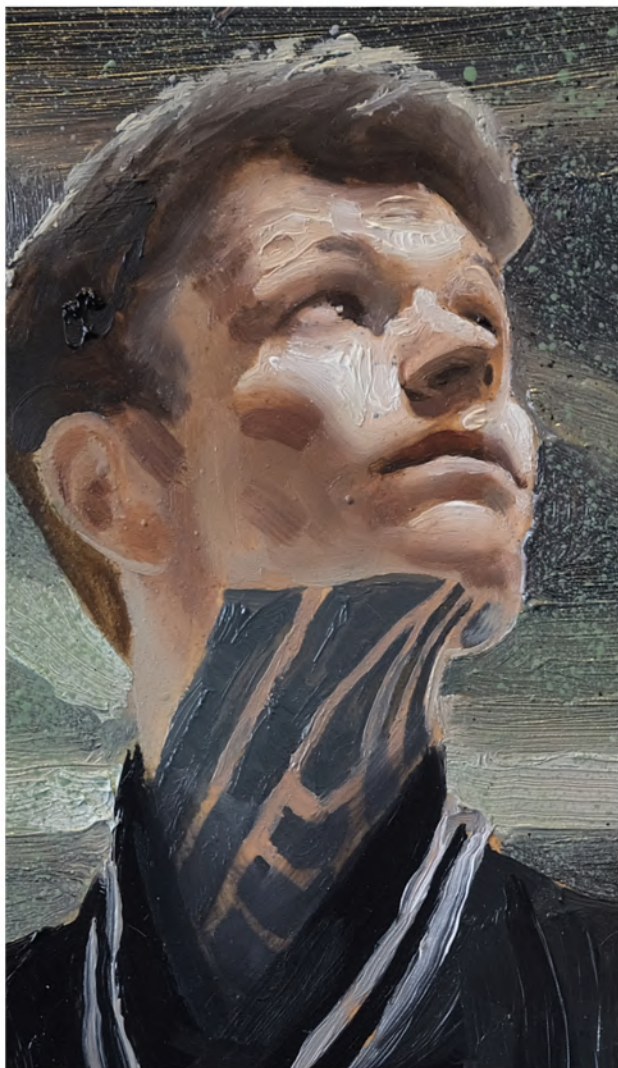
STEFAN  
SMIT



**'BOUND'**

**OIL ON PANEL  
365mm X 550mm  
FRAMED IN A SLEEK MATT  
BLACK ALUMINIUM**

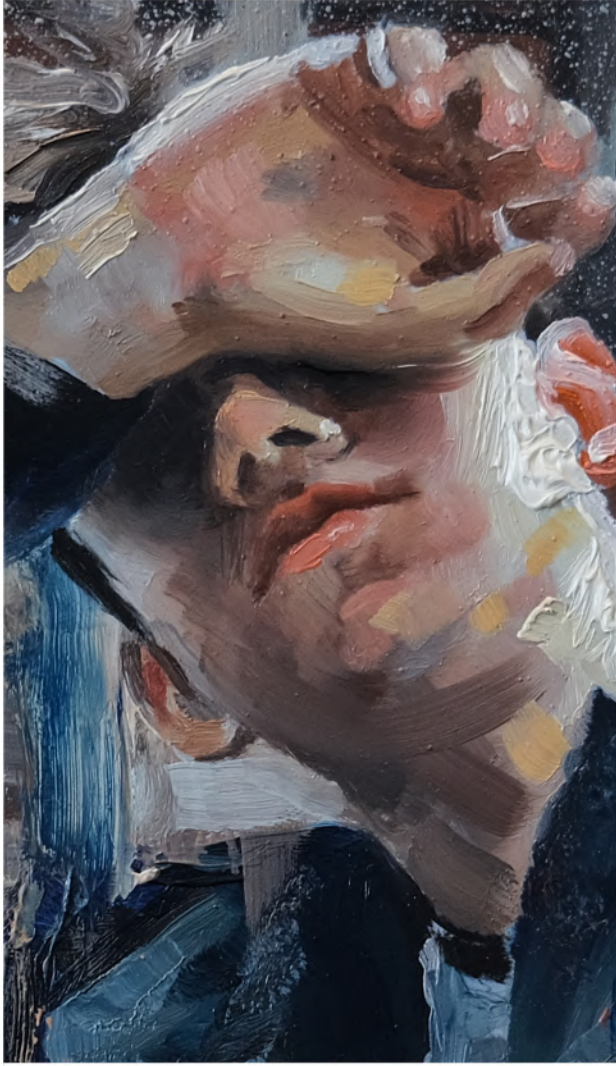
*"Having studied classical music and originally deciding to go in that direction it came as a tough life decision to make the change to fine art, always having this 'what if' feeling about the road I decided not to take. When I understand friends, family or observe strangers and think about how many of these types of decisions might have affected their lives I'm often stopped dead in my tracks at the idea of the infinite possibility of choice that surrounds us and how, sometimes through choice or necessity we each have our own path that we're Bound to in some special way."*



**'RISE'**

**OIL ON PANEL  
365mm X 550mm  
FRAMED IN A SLEEK MATT  
BLACK ALUMINIUM**

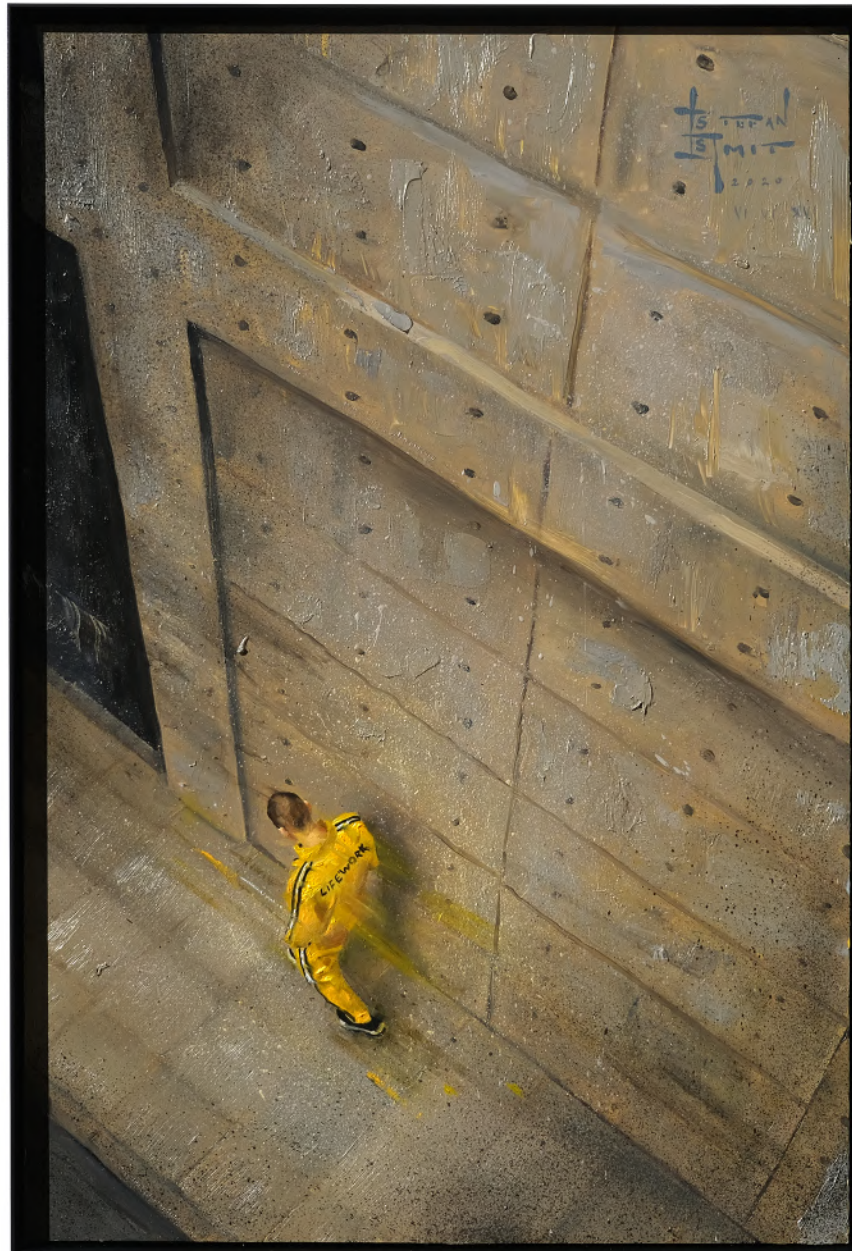
*"We all wear faces that we show the world but we also have hidden sides, marked by our past, that affect and influence us. This is often represented in the underground in my work, symbolizing our subconscious beliefs and desires."*



**'INDEX, FILE, CATALOG'**

**OIL ON PANEL  
14.37' X 21.65'  
FRAMED IN A SLEEK MATT  
BLACK ALUMINIUM**

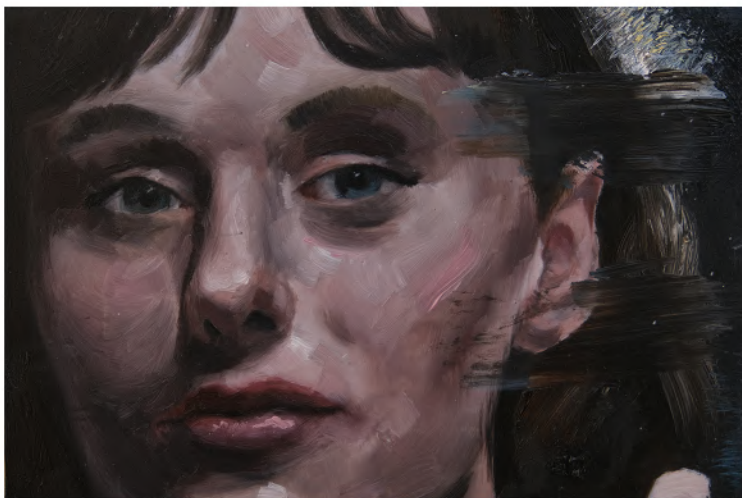
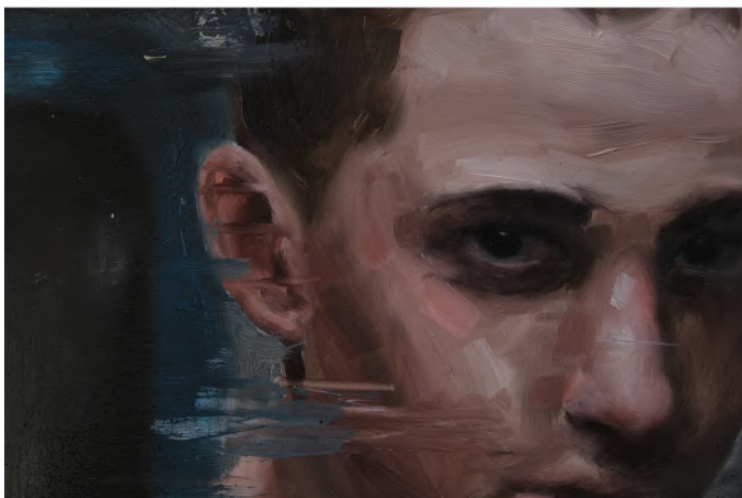
*"In times of chaos we sometimes lean a little too far in the opposite direction to try to balance out the feelings of our own loss of control, which is what this piece represents - a compulsive desire to Index, File and Catalog (which is what the apartments represent) various aspects of our lives. Some take this task further than others and even allow it to blind them from other more difficult truths."*



### 'LIFEWORX'

OIL ON PANEL  
365mm X 550mm  
FRAMED IN A SLEEK MATT  
BLACK ALUMINIUM

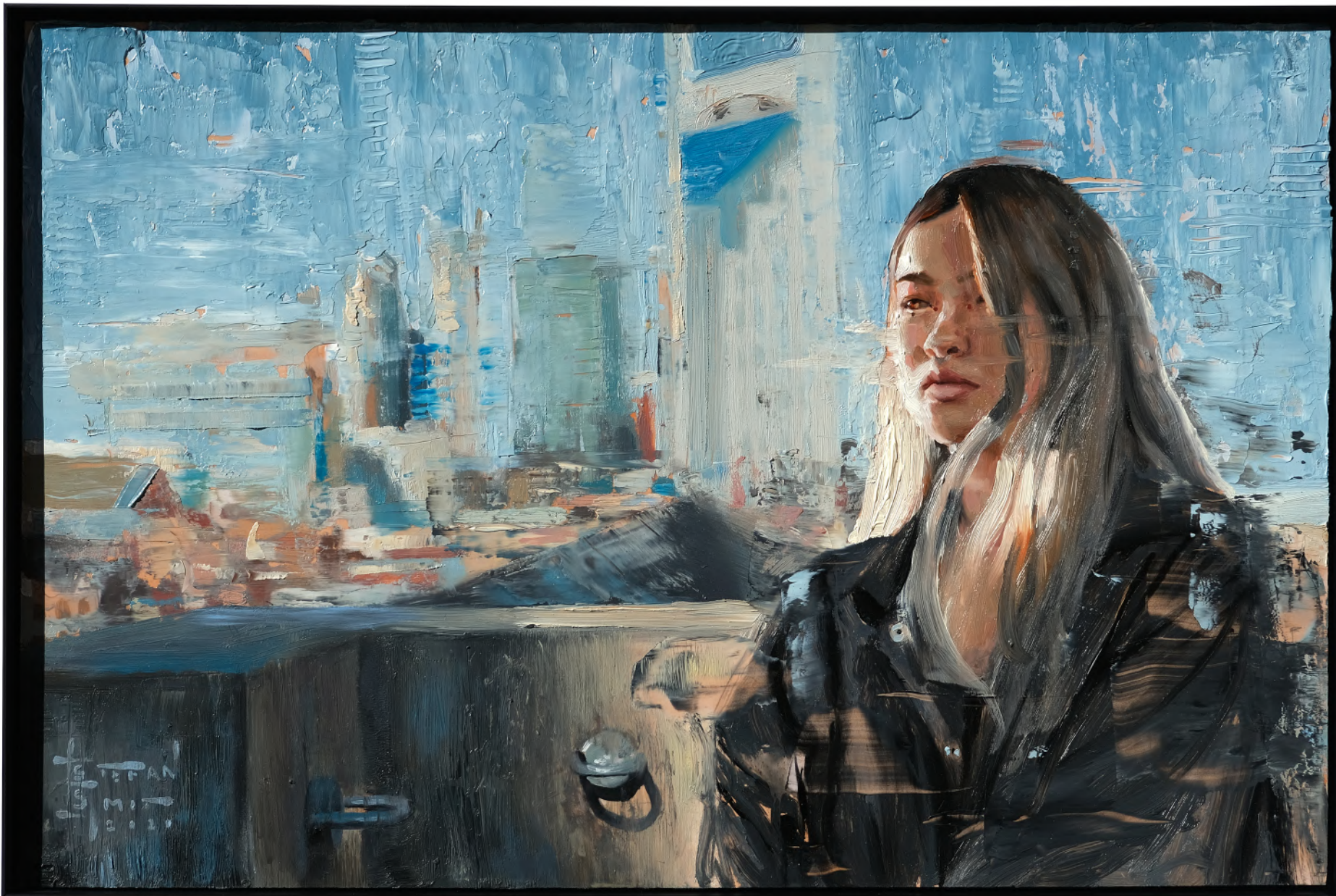
*"Everything we do is always so personal and subjective, from our careers to our goals and aspirations. So when I chose to paint this piece it's because it felt like I was gazing into a critical moment of someones life, very busy and intent on their own Lifework, dreams and ambitions - a pivotal moment in a person sized universe of its own, that I just happened to partake in, in some very minor way."*



**'SAME STORM, DIFFERENT BOAT'**

**OIL ON PANEL  
365mm X 550mm  
FRAMED IN A SLEEK MATT  
BLACK ALUMINIUM**

*"Certain symbols seem to repeatedly crop up in my work and one of them has been trains. As I came across this photo I had an odd compulsion to paint it, half cropping out the man's face and slightly obscuring him from view felt like an oddly apt metaphor for the current global situation as we all find ourselves aboard for the same journey. Some more able to cope and in different carriages and others just holding on. Destination currently unknown."*



**'TOGETHER,  
SEPARATELY'**

**OIL ON PANEL  
550mm X 365mm  
FRAMED IN A SLEEK MATT  
BLACK ALUMINIUM**

*"In an era of instant gratification and abundant social connection through tech giants I sometimes feel lulled into a false sense of contentment but lack the real thing, which is why I wanted to make this painting to express the oxymoron in a visual way and to add a small detail that digital media hasn't gotten right yet, the physical sense of something - with gauged textures and thick paint! It almost yearns to be touched and physically experienced."*





**'GABRIEL'S'**

**OIL ON LOOSE CANVAS  
1340mm X 900mm**

*"I believe every interaction leaves us with some small part of that person, whether this encounter is physical or from someone who influences us online. These influences can be insignificant and at other times rock the foundation of our world."*



**'EXIT'**

**OIL ON LOOSE CANVAS**  
900mm X 1340mm

*"A million different routes that all please different people. We've all felt pressure to live a certain way or conform to certain ideologies to appease people in our lives and sometimes the hardest decision is a simple choice to live a certain way. The race is long and at the end it is only with yourself."*



**'NEON NIGHTS'**

**OIL ON PANEL  
550mm X 365mm  
FRAMED IN A SLEEK MATT  
BLACK ALUMINIUM**

*"An artificial hum and warm  
ambient nights of stars and light  
that pool and swirl as cabs take  
flight."*



**'BATHED IN NIGHT'**

**OIL ON PANEL  
550mm X 365mm  
FRAMED IN A SLEEK MATT  
BLACK ALUMINIUM**

*"The night is a special time with a certain unrestrained quality that doesn't have imposed limits like the day. A night time stroll can clear your thoughts and produce some amazing ideas."*



**'DIVIDING LINES'**

**OIL ON PANEL  
550mm X 365mm  
FRAMED IN A SLEEK MATT  
BLACK ALUMINIUM**

*"Destruction is a form of exploration for me because by not being too precious I'm able to tear away at the layers of my subject and gradually piece them back together, which is sometimes like a visual narrative that weaves itself - like people watching for artists..."*



**'BLINKING LIGHTS  
PASS US BY'**

**OIL ON PANEL  
550mm X 365mm  
FRAMED IN A SLEEK MATT  
BLACK ALUMINIUM**


*"Another train, this time symbolising the fleeting nature of existence, relationships and in this circumstance, encounters. I've very rarely had chance interactions that stay with me for years but this piece felt like one of those moments."*



**'HOMAGE TO NIGHT'**

**OIL ON LOOSE CANVAS  
900mm X 1340mm**

*"Every exhibition takes me further into the murky depths of night as I find my routine slipping further into that ultramarine blue with each passing week as my shows close in and I love it! There's a special feeling that creeps in, in the early hours, knowing you're one of the only people awake as the sun begins to rise and a strange type of creativity that takes root in the heart and breaks free with canvas and brush. I've always produced my best work at night and felt a sense of appreciation that I wanted to bring into being. Thank you, Nocturne"*



**'CHANCE ENCOUNTERS'**

**OIL ON LOOSE CANVAS**  
**1340mm X 900mm**

*"That exact specific moment you see someone you strangely enough feel a connection with but haven't yet shared a word with. That exact moment of exhilaration or perhaps recognition. That is what this piece is about for me, but it could mean something completely different for you and that's great."*

**STEFAN  
SMIT**

2020

VI. VI. XXI





# BOUND

A SOLO EXHIBITION BY STEFAN  
SMIT WITH ABEND GALLERY

T H A N K   Y O U

- VI VI XVI -

*Firstly I'd like to thank you for taking the time to look through my work. I wouldn't be where I am without all the continued love and support.*

*A huge thank you to Dave and Abend Gallery who I've been following for years and now have the privilege of working with. It's a huge honour.*

*A big thank you to Daler-Rowney for the continued support with all my art materials and my partner and family for the continued encouragement.*

**If you'd like to chat about any pieces or talk art please feel free to email me:  
[art@stefansmit.co.za](mailto:art@stefansmit.co.za) or Abend Gallery at [info@abendgallery.com](mailto:info@abendgallery.com)**

ABEND  
GALLERY

B O U N D  
S O L O

STEFAN  
SMIT